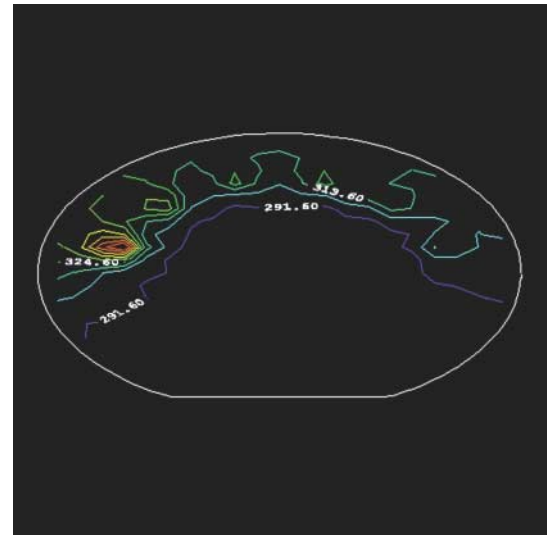


surface map



contour map

Accessories and Options

- Cassette-to-cassette sorting
- Capacitance thickness capability
- Wafer mapping
- SPC
- Calibration standards
- 1-4 cassettes for 2", 3", 4"(100mm), 6"(150mm) wafers
- 2 cassettes for 8" (200mm) wafers
- Scanning End Effector
- Light Shield

Available Power Configurations

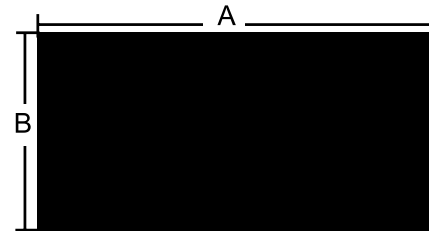
- 117 VAC \pm 10% 50-60 Hz
- 220 VAC \pm 10% 50-60 Hz
- 100 VAC \pm 10% 50-60 Hz

Vacuum

- 40-60 cm Hg

1510RP/RS Footprint

Manual	A (width)	B (depth)
Tabletop Stand Alone	31"(787mm)	20" (508mm)
Robotic	A (width)	B (depth)
1510RP	37" (950mm)	41" (1040mm)
1510RS	48" (1219mm)	40" (1014mm)



* Specifications subject to change; contact LEI for the latest details.

For More Information:

Lehighton

Electronics, Inc.

P.O. Box 328

Lehighton, PA 18235-0328

Phone

(800) 535-1112

(610) 377-5990

Fax

(610) 377-6820

On the

World Wide Web:

www.lehighton.com

E-mail

lei@ptdprol.com

300mm Resistivity Thickness has arrived!
LEI 1510RS-300 (200-300mm with integrated thickness)
 footprint: 86" (2184mm)w x 40" (1016mm)d w/monitor float
 Contact LEI for more details.